

OFFICE SPACE FOR RENT

1600 Square Foot TWO FLOOR (Office Building)

First floor 1100 Square Feet - Second Floor 500 Square Feet.

Included:

1. Large conference room
2. Within ¼ mile of interstate on-ramp
3. Bus stop within 20 Feet
4. Access to Richland, Johnstown and Westmont within 5 minutes
5. Dedicated Secretary Area
6. Central AC
7. Computer network ready to go
8. Free Parking On and Off Street
9. High visibility location
10. Handicap accessible office and restrooms
11. First and second floor has office restrooms
12. First and second floor has office kitchens

OPTION 1:

\$950/Monthly first floor only, utilities included.

OPTION 2:

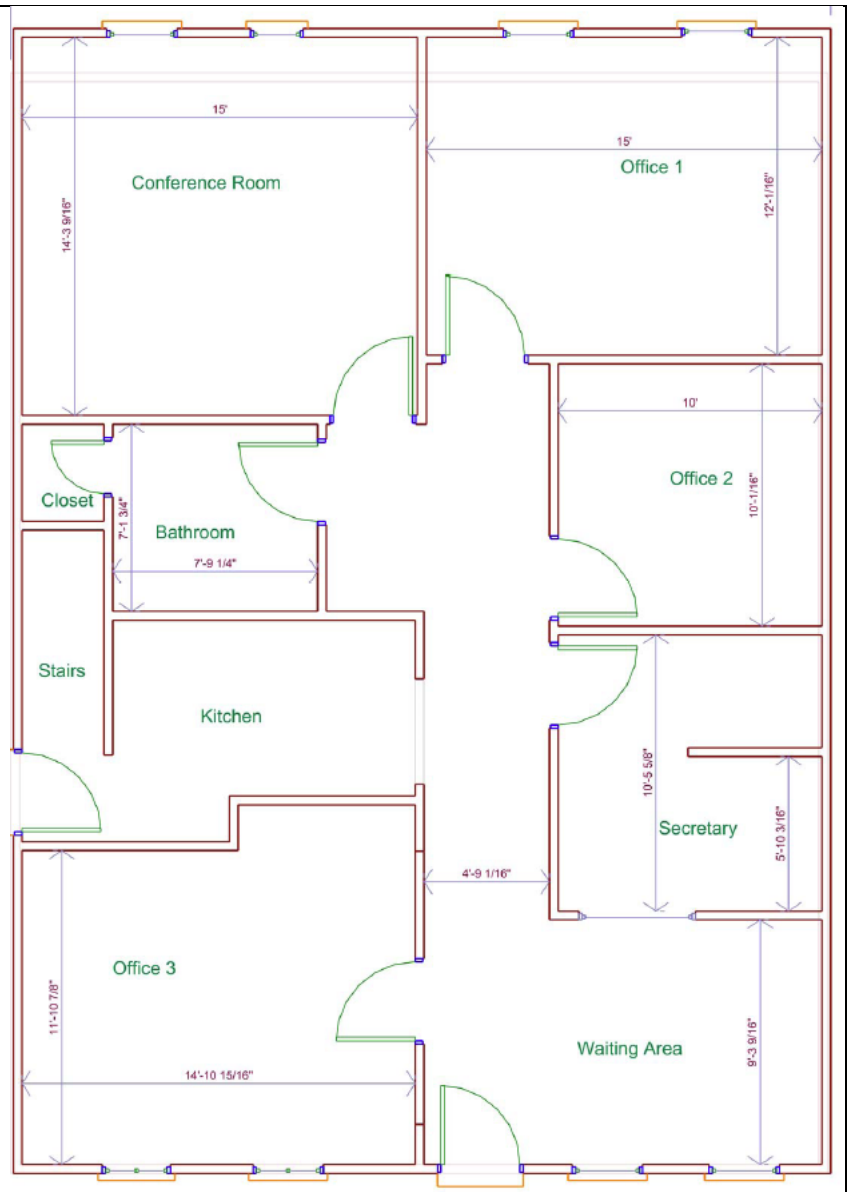
\$1500/Monthly first and second floor access, we pay utilities, we do grounds keeping, high speed internet included, limited tech support included for your computers and computer network.

For More Info Call or E-mail:

Mike Danchanko
digital.iway
814-536-5332 x 103
mike@digitaliway.com

Location: 752 Bedford Street

Stop by for a tour (Appointments recommended)



For more information call digital.iway: 814-536-5332 x103